

THE GOLD STANDARD IN PLAYGROUND SAFETY & PERFORMANCE

SprintPlay Optimum is the ultimate playground turf system, designed for safer play, durability, and performance. Featuring dual-fiber technology, it creates a dense surface for superior wear resistance and consistent play. Unlike standard playground turf, ProFlow™ backing ensures unmatched drainage, keeping surfaces dry and ready for action. Tested for 12' critical fall height protection and made with antimicrobial, anti-static, and hypoallergenic properties, Optimum provides a long-lasting, American-made solution for schools, parks, and play spaces.

FEATURES

- **Dual-Fiber Technology** – Dense canopy for durability & consistent play.
- **Certified for 12' Fall Protection** – Attenuating system will meet or exceed IPEMA certification standards.
- **ProFlow™ Drainage** – Dries faster, reduces slips, and keeps play areas cleaner.
- **Antimicrobial & Hypoallergenic** – Healthier, cleaner play due to technology that inhibits the growth of bacteria.
- **Made in America & Built to Last** – UV-resistant, durable, and expertly installed nationwide.



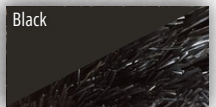
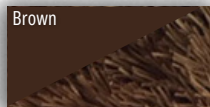
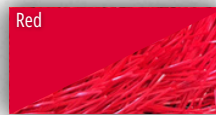
THE ULTIMATE SURFACE FOR PLAY & PERFORMANCE

SprintPlay Elite is a versatile, high-performance turf system designed for playgrounds and outdoor fitness spaces. Featuring monofilament fibers for durability and 20oz backing with drainage holes, it delivers a safer, long-lasting, and weather-resistant surface. Available in six standard colors with custom color options, Elite is Made for Play™!

FEATURES

- **Durable Monofilament Fibers** – Built for long-lasting performance in high-traffic areas.
- **20oz Backing with Drainage Holes** – Caster oil-based urethane backing promotes all-weather play, as well as, improved flexibility and elongation
- **Vibrant & Customizable** – Available in 6 standard colors with custom color-matching options.
- **Soft Yet Resilient** – Cushioned feel underfoot with exceptional durability.
- **Low Maintenance & Eco-Friendly** – No mowing, watering, or harsh chemicals—just easy upkeep.
- **Nationwide Installation** – Expertly installed for precision and longevity.

COLOR OPTIONS



*Please note that the colors represented in regard to this product may vary within industry standards from actual material.

